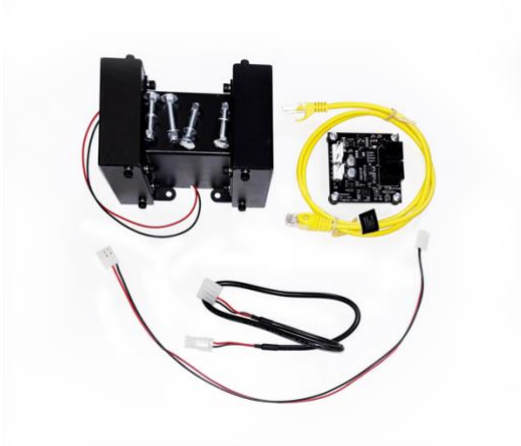


FUNHOUSE REMAKE

Shaker kit installation

What is included in your package:

- Shaker motor
- Shaker motor Driver PCB
- Yellow Lan cable
- PCB Power cable (3Pin Molex Connector)
- Shaker Power Cable (4pin Molex Connector)



Tools needed:

- Screwdriver Philips PZ2
- 8mm Wrench or Pliers
- Drill with a 6mm (0.25inch) drill bit

Installation can take more or less 30 min,
do not rush it, take your time and if you
need help send us a message.

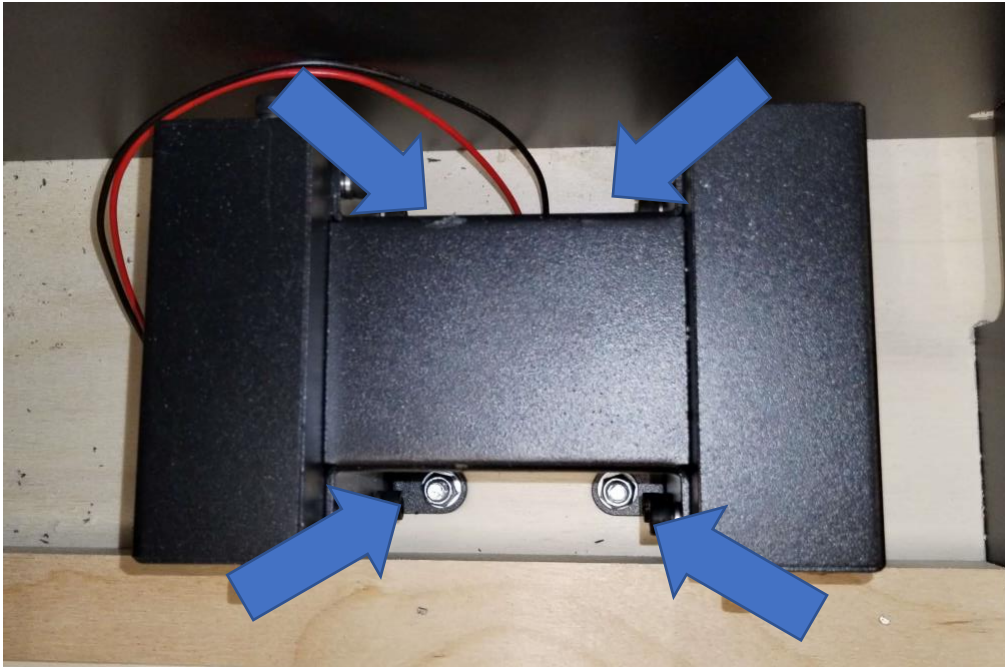
STEP 1:

Identify the correct install the shaker motor, you need to identify the 4 pilot holes inside the cabinet (bottom right). Using your Drill drills these 4 holes.



Step 2:

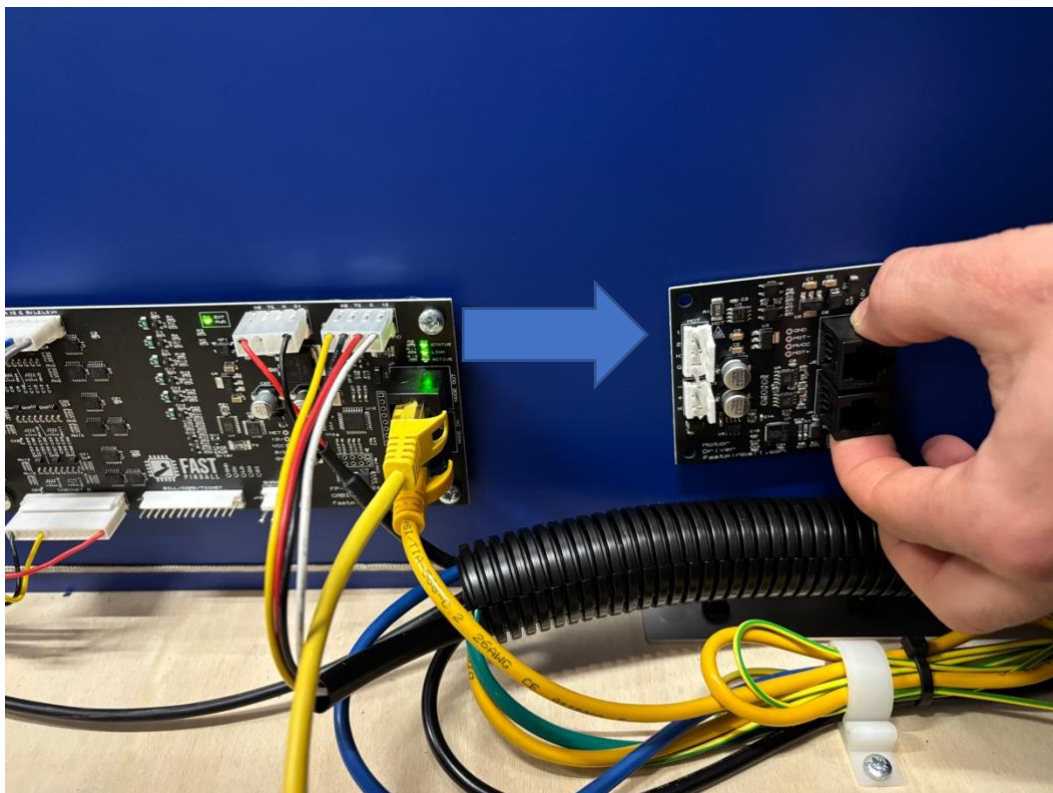
Install shaker motor in the correct position using the 4 nut and bolts included in the kit.



Step 3:

Place the Shaker motor Driver PCB near the Cabinet I/O board.

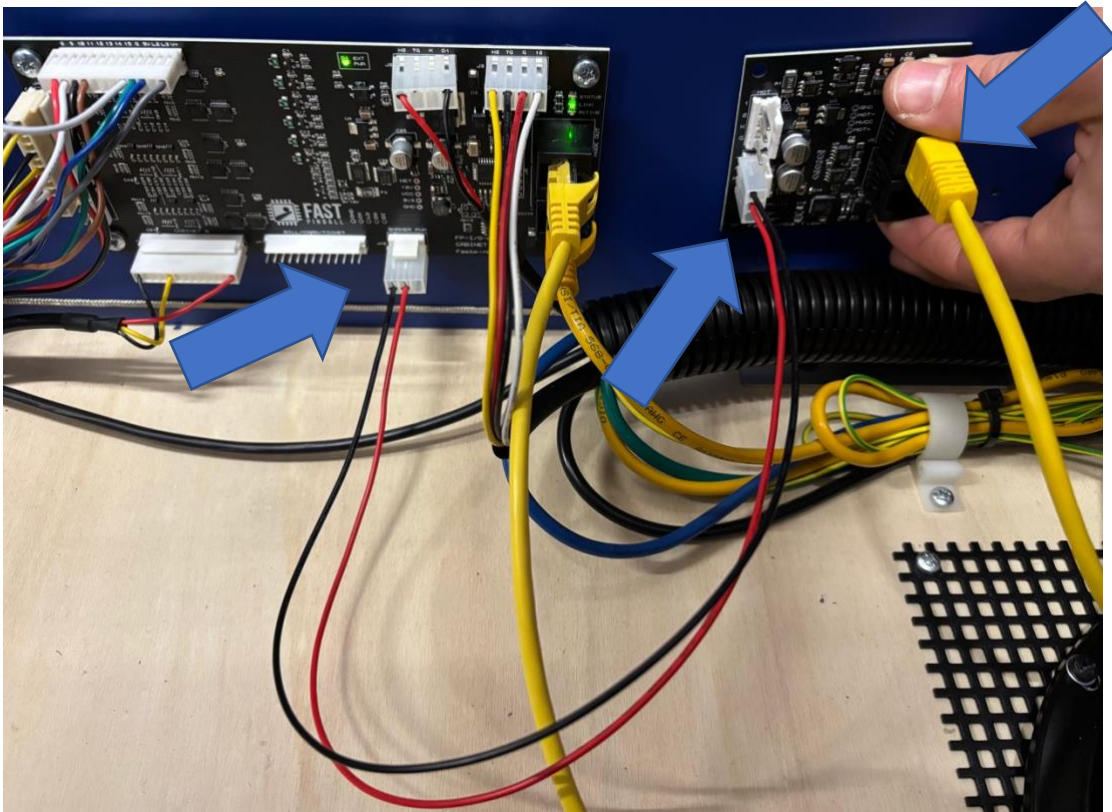
Try to install it more or less parallel to the Cabinet PCB and not too far from it (like in this picture)



Step 4:

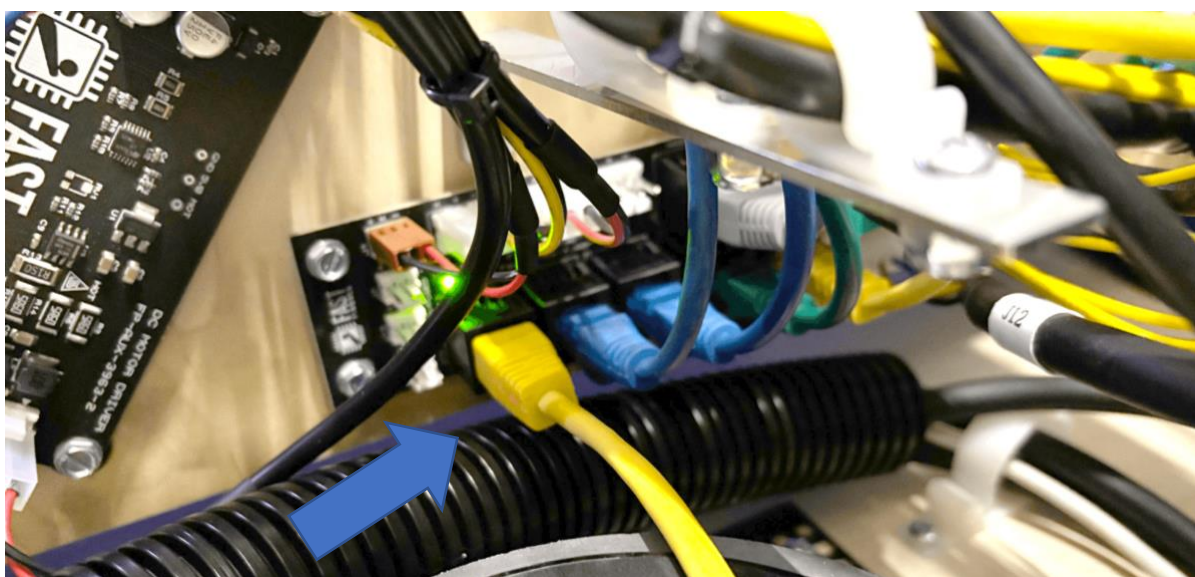
Before next steps be sure that your game is **POWER OFF**.

- Connect LAN cable to J2 Port on the Shaker driver PCB.
- Connect PCB Power cable to shaker **POWER PWR J12** port on the I/O Board.
- Connect to the **3PIN** port on the Shaker driver PCB.



Step 5:

Connect the LAN YELLO CABLE to the **PLAYFIELD Interchange PCB** port **J14**.
PORT J14 is an empty port on the **LEFT** side of the PCB.

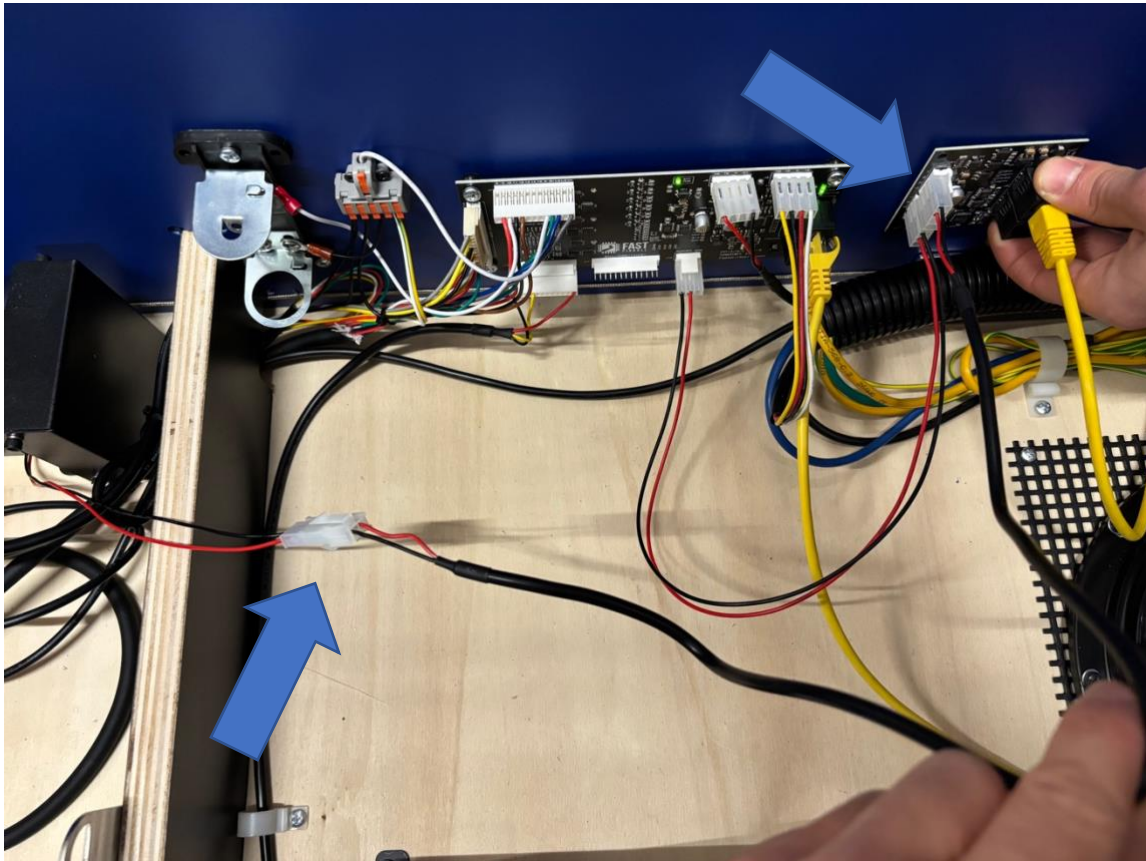


Step 6:

Connect the Shaker Power Cable (4pin Molex Connector) to the Shaker driver PCB port named: MOT.

Connect the 2PIN Molex connector to the Shaker motor (wires colors can be Inverted, don't worry about it).

Please double check all the connections before POWER ON your game.



Step 7:

After double check all the connections you can power on your game.

You need to able in the extended Menu your shaker Motor.

To do so you need to Enter in the Extended menu and change Shaker Motor Setting to YES.

**E : SHAKER
YES**